



Project Name:	
Type:	Date:
Catalog #:	

Description:

The Nulite CL series luminaire is designed to be corner mounted which is ideal for illuminating corridors and room perimeters. The luminaire is available in a rough service housing for vandal resistant or hard use applications.

Specifications:

Construction: Die formed 20 gauge cold rolled steel housing with T-hinge door frame, latches and prismatic acrylic lens. Other shielding options are available, consult factory. Housing finish is white electrostatically applied powder coat paint.

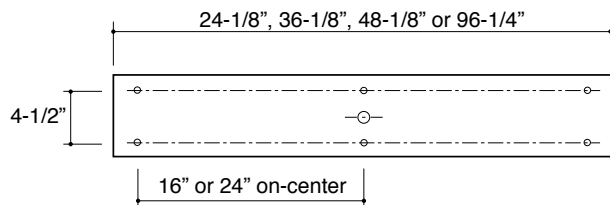
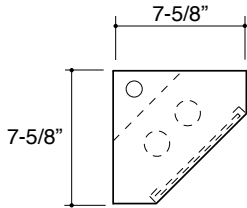
Optional Vandal Resistant Housing (VR) - Die formed 16 gauge cold rolled steel housing with piano hinge door frame, polycarbonate pattern 12 prismatic lens and spanner head stainless steel door screws. Housing finish is white electrostatically applied powder coat paint.

Reflector / Ballast: Ballast cover/reflector is finished with high reflectance white powder coat paint. Standard electronic, Class P, ballast. Universal voltage ballast is for 120 to 277V.

Lamping: 1 or 2 lamp cross-section in nominal 2', 3', 4' or 8' lengths. Luminaire can be ordered with lamps, consult factory.

Mounting: Wall. Mounting holes and KOs located on adjacent sides.

Labels: UL / cUL Damp location listed.



Mounting holes and KOs located on adjacent sides.

Ordering Information

Sample: CL-232T8-UNV-HEISN-VR

Series	Lamp	Wattage	Voltage	Ballast	Options	
CL	1	14T5	UNV	T8 Options	Ballast Factor	VR Vandal Resistant Housing (Refer to description above) EM ³ Emergency Battery Pack AL Aluminum Housing (0.060") PH Piano Hinge SS Stainless Steel Housing (Unfinished) QW Quick Through Wiring for Continuous Row Applications GLR Fusing 16GW 16 Gauge CRS Housing w/ Piano Hinge POLY12 Polycarbonate Pattern 12 Lens TPSW Tamper Resistant (Spanner head) & Phillips Head Door Screws. (Make selection in field)
		24T5HO		IS (Standard) Instant Start	N Normal (Standard)	
	2	17T8	120	PS Program Start	L Low	
		21T5	277	HEIS High Efficiency Instant Start	H High	
		39T5HO	347 ²	HEPS High Efficiency Program Start		
		25T8		T5/T5HO	Ballast Factor	
		28T5		PS (Standard) Program Start	N Normal	
		54T5HO		HEPS ² High Efficiency Program Start		
		32T8		All Lamp Dimming Options		
		28T5-8 ¹		DIM ² Dimming		
		54T5HO-8 ¹		SD ² Step Dimming		
		32T8-8 ¹				

Notes:

1. Tandem lamp nominal 8' housing has two doors.
2. Consult factory.
3. Specific voltage must be ordered for this option. Consult factory for nominal 2' unit.

Specifications and dimensions are subject to change without notification. Specification sheets on our website supersede all other versions. 2010 Rev. B2 Nulite reserves the right to bulk package any order.

Photometric Data : CL-232T8

Characteristics

Lamp Lumens	2900
Total Rated Lamp Lumens	5800
Maximum Candela	1113
Maximum Candela Angle	45

Zonal Summary

Zone	Lumens	% Lamp	% Fixture
0-30	422	6.6	18.8
0-40	709	11.1	31.6
0-60	1361	21.3	60.6
0-90	2105	32.9	93.7
90-180	142	2.2	6.3
0-180	2247	35.1	100.0

