



Project Name:	
Type:	Date:
Catalog #:	

Description:

The Nulite FCL series is an ideal solution for lighting cold storage, food processing, covered outdoor structures, industrial and commercial applications. The luminaire housing is NSF certified.

Specifications:

Construction: Rugged corrosion resistant white housing is comprised of fiberglass, continuous closed cell gasket, clear acrylic diffuser, toggle latches and end plugs.

Diffuser: Deep clear 85/15 DR acrylic with diffuse ends.

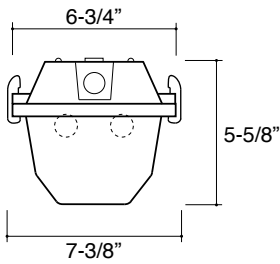
Reflector / Ballast: Ballast cover/reflector is formed of 20 gauge cold rolled steel with a white powder coat finish. Optional Miro® 4 specular anodized aluminum performance and wide distribution reflectors. Standard electronic, Class P, ballast. Universal (UNV) voltage ballast is from 120 to 277V.

Lamping: 1 and 2 lamp cross-section T5, T5HO or T8; 3 lamp cross-section T5 or T8. Luminaire can be ordered with lamps, consult factory.

Mounting: Pair of stainless steel mounting brackets included.

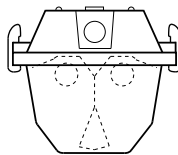
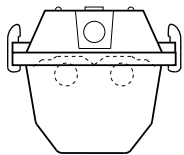
Labels: UL / cUL listed for Wet Location, IP67, NSF/ANSI Standard 2 certified.

End Views



RM1 Reflector

RM5 Reflector



Length	Wattage
52"	28T5, 54T5HO, 32T8
100"	28T5-8, 54T5HO-8, 32T8-8, 59T8

Ordering Information

Sample: FCL-254T5HO-UNV-PSN-RM5-SSL

Series	Lamp	Wattage	Voltage	Ballast	Options
FCL					
	1	28T5	UNV	T8 Options	EM ⁴ Emergency Battery Pack
	2	54T5HO	120	IS (Standard)	MLS Multi-level Switching
	3 ¹	32T8	277	PS	OS65 Occupancy Sensor IP65 (Refer to technical page for distribution)
		28T5-8	347 ²	HEIS	GLR Fusing
		54T5HO-8	480 ²	HEPS	RM1 Performance Reflector
		32T8-8		T5/T5HO	RM5 ⁶ Wide Reflector
		59T8 (F96T8)		PS (Standard)	HE (1) 1/2" End Hub Entry (Factory Installed)
				HEPS ²	SSL Optional Stainless Steel Latches
				All Lamp Dimming Options	
				DIM ² Dimming	
				SD ² Step Dimming	
				IS=Instant Start	CP3/6 (NEMA) ³ 6' SJT Cord - (NEMA Plug Designation) ie. CP3/6-(L7-20)
				PS=Program Start	
				HEIS=High Efficiency Instant Start	
				HEPS=High Efficiency Program Start	

Notes:

1. Max. ambient operating temp. is 45°F for T5HO.
2. Consult factory.
3. Luminaire is listed for Damp Location for this option. Consult factory for Wet Location with cord.
4. Specific voltage must be ordered for this option.
5. Not available for 59W T8.
6. 2 lamp only for R5, wide distribution, reflector.

Specifications and dimensions are subject to change without notification. Specification sheets on our website supersede all other versions. 2010 Rev. B2 Nulite reserves the right to bulk package any order.

