



Project Name:	
Type:	Date:
Catalog #:	

Description:

The Nulite SET staggered lamp strip luminaire has a 3" overlap to reduce socket shadows. Optional telescoping (SEL) for 18" of adjustment. This luminaire is ideal for commercial, retail and industrial applications.

Specifications:

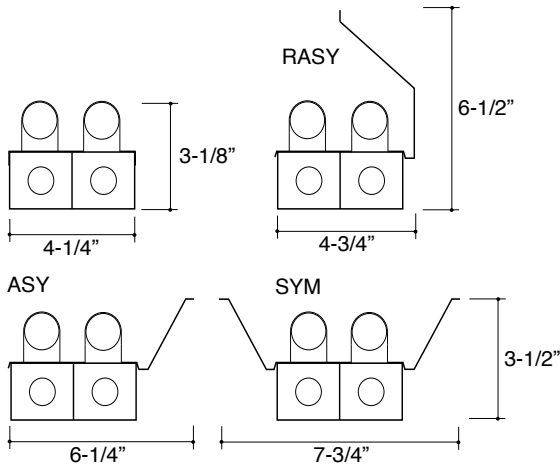
Construction: Die formed 22 gauge cold rolled steel designed for maximum strength with 7/8" KOs. The housing finish is white polyester polymer with a minimum of 82% reflectance. Luminaires have a 3" overlap to reduce socket shadows.

Reflector / Ballast: Ballast cover/reflector is finished with a minimum of 82% reflectance baked white enamel. Standard electronic, Class P, ballast. Universal (UNV) voltage ballast is from 120 to 277V.

Lamping: 2 lamp cross-section T8. Nominal 6' or 8' housing is a tandem lamp configuration. Luminaire can be ordered with lamps, consult factory.

Mounting: Surface mounted individually or in continuous rows.

Labels: UL / cUL listed. Damp location is optional.



Length	Wattage
27"	17T8
39"	25T8
51"	32T8
75"	25T8-6
99"	32T8-8

Ordering Information

Sample: SET-232T8-277-HEISN-EM-SYM

Series	Lamp	Wattage	Voltage	Ballast	Options
	2				
SET		17T8	UNV	T8 Options	EM ² Emergency Battery Pack
SEL ⁴ (Telescoping)		25T8	120	IS (Standard) Instant Start	DL Damp Location
		32T8	277	PS Program Start	WG ³ Wireguard
		25T8-6	347 ¹	HEIS High Efficiency Instant Start	GLR Fusing
		32T8-8		HEPS High Efficiency Program Start	QW Quick Through Wiring for Continuous Row Applications
				Dimming Options	
				DIM ¹ Dimming	
				SD ¹ Step Dimming	

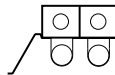
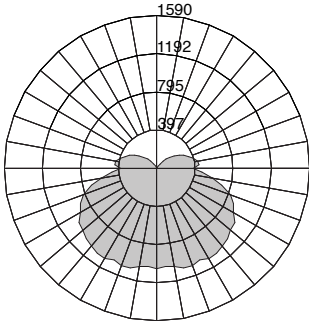
Notes:

1. Consult factory.
2. Emergency battery pack is not available for nominal 2' unit; consult factory for 3' unit. Specific voltage must be ordered for this option.
3. Wireguard is not available with all reflectors, consult factory.
4. Not available for nominal 2', 6' and 8' units.

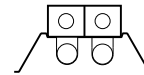
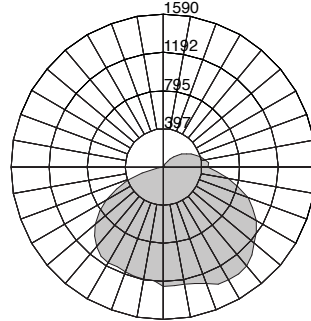
Photometric Curves



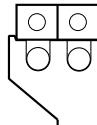
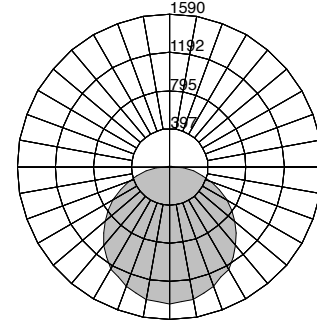
Cat.# SET-232T8...*
Initial lamp lumens - 5800
Efficiency - 91%



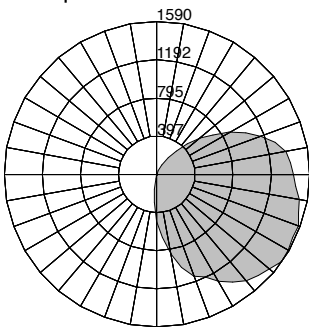
Cat.# SET-232T8...-ASY*
Initial lamp lumens - 5800
Efficiency - 89%



Cat.# SET-232T8...-SYM*
Initial lamp lumens - 5800
Efficiency - 85%



Cat.# SET-232T8...-RASY*
Initial lamp lumens - 5800
Efficiency - 78%

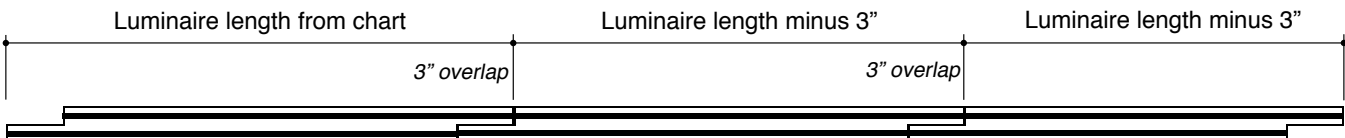
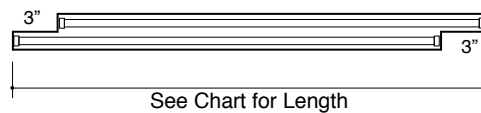


*Housing is finished with a minimum of 82% reflectance white polyester polymer.

Calculating Run Lengths

The Nulite SET staggered narrow strip is a commercial grade luminaire which has a 3" overlap to reduce socket shadows. See below to calculate run lengths. We recommend a minimum of 6" to 8" of unlighted portion per each end of the run for luminaires mounted in an architectural detail (cove or slot) by others.

Length	Wattage
27"	17T8
39"	25T8
51"	32T8
75"	25T8-6
99"	32T8-8



Example: (Two nominal 8' and one nominal 3') = 99' + (99' - 3") + (39' - 3") = 231" (19'-3")

Specifications and dimensions are subject to change without notification.