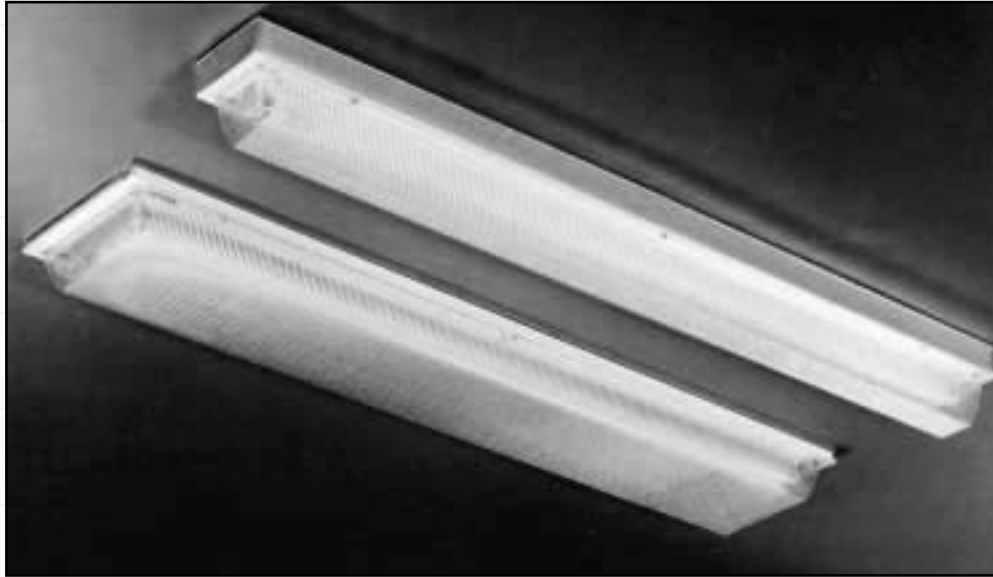


VANDAL RESISTANT

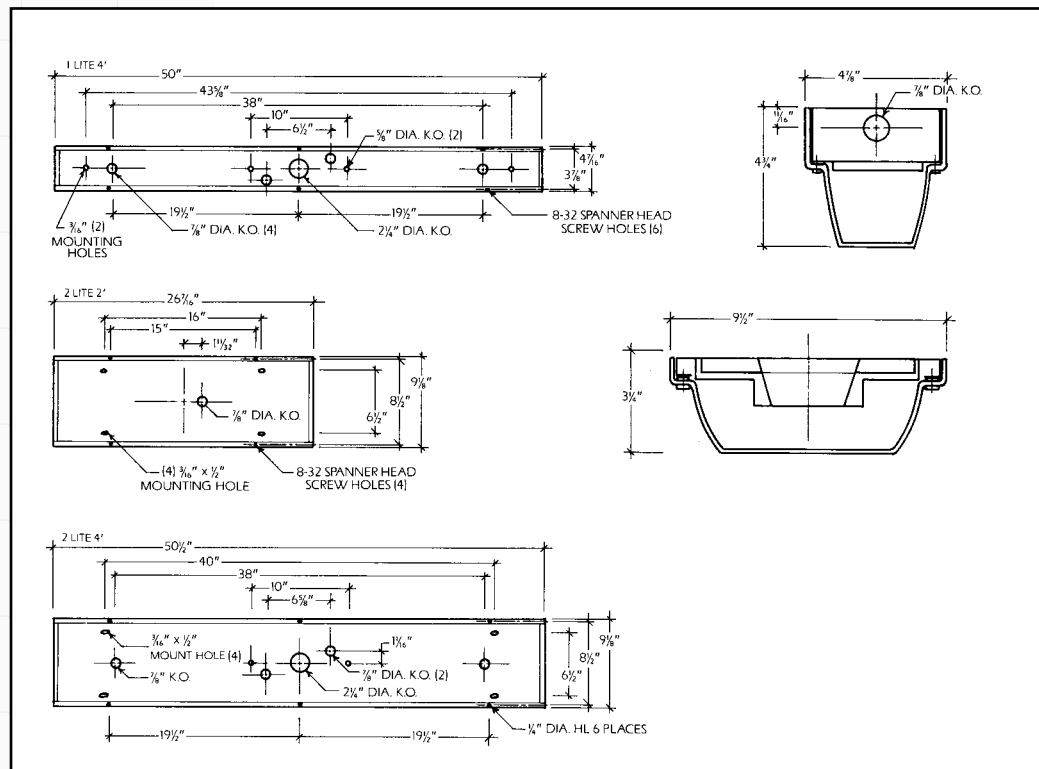
SPECIFICATIONS

HOUSING: Housing is die formed from 20 gauge steel.
SHIELDING: .187 clear polycarbonate with pyramidal prism design on the bottom and vertical perimeter rib for maximum light control and efficiency. The lens will protect the light source against abuses, such as severe impact and other types of vandalism.
ELECTRICAL: Ballasts are Electronic and CBM-ETL certified. Fixtures are U.L Listed.

MOUNTING: Individual mounting on wall or ceiling.



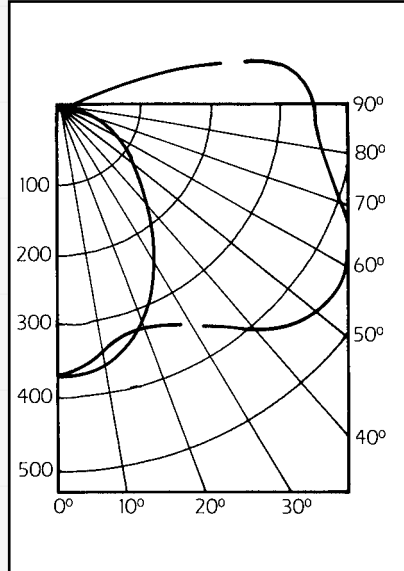
DIMENSIONAL DATA



PHOTOMETRIC DATA

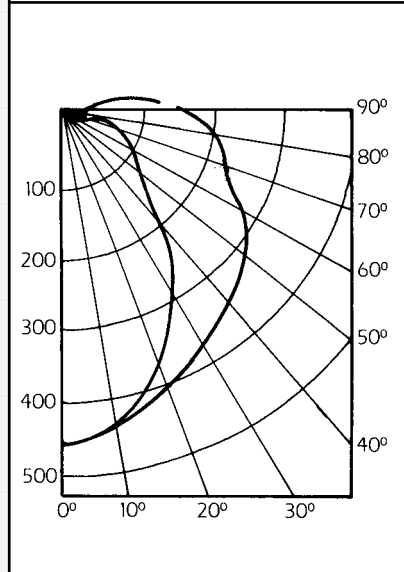
1 LITE 40 WATTS FIXTURE

COEFFICIENTS OF UTILIZATION										
FLOOR	20%									
CEILING	80%				50%				10%	
WALLS	70%	50%	30%	10%	50%	30%	10%	50%	30%	10%
1	77	72	67	63	62	59	56	51	49	47
2	69	61	55	49	53	48	44	43	40	37
3	62	53	46	40	46	40	36	37	34	31
4	57	46	39	33	40	34	30	33	29	25
5	52	41	33	28	35	29	25	29	25	21
6	48	36	29	24	32	26	21	26	22	19
7	44	33	25	20	28	23	18	24	19	16
8	40	29	22	18	26	20	16	21	17	14
9	38	27	20	16	23	18	14	20	15	12
10	35	24	17	13	21	16	12	17	13	10



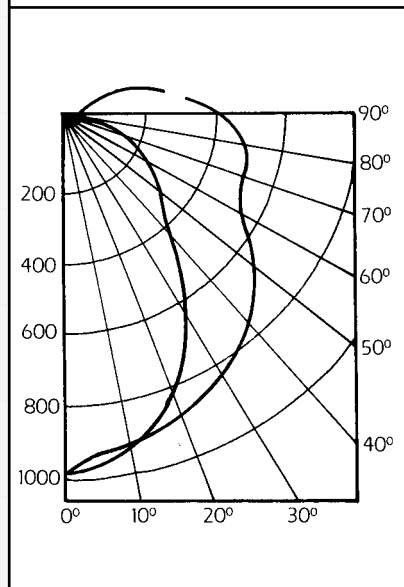
2 LITE 20 WATTS FIXTURE

COEFFICIENTS OF UTILIZATION										
FLOOR	20%									
CEILING	80%				50%				10%	
WALLS	70%	50%	30%	10%	50%	30%	10%	50%	30%	10%
1	60	57	54	51	51	49	47	45	43	42
2	55	49	45	42	45	42	39	39	37	36
3	50	44	39	35	40	36	33	35	33	31
4	46	39	34	30	36	32	28	32	29	26
5	42	35	30	26	32	28	25	29	26	23
6	39	32	27	23	29	25	22	26	23	21
7	36	29	24	20	27	22	19	24	21	18
8	34	26	21	18	24	20	17	22	19	16
9	32	24	19	16	22	18	15	20	17	15
10	29	21	17	14	20	16	13	18	15	12



2 LITE 40 WATTS FIXTURE

COEFFICIENTS OF UTILIZATION										
FLOOR	20%									
CEILING	80%				50%				10%	
WALLS	70%	50%	30%	10%	50%	30%	10%	50%	30%	10%
1	58	55	52	50	50	47	45	43	42	41
2	53	48	44	41	43	40	38	38	36	34
3	49	43	38	34	39	35	32	34	32	30
4	45	38	33	29	35	31	28	31	28	26
5	41	34	29	26	31	27	24	28	25	23
6	38	31	26	23	29	25	22	26	23	20
7	36	28	23	20	26	22	19	23	20	18
8	33	26	21	18	24	20	17	22	18	16
9	31	23	19	16	22	18	15	20	17	15
10	28	21	16	13	19	16	13	18	15	12



ORDERING INFORMATION:

T5 AND T5HO

Catalog No.	Lamps	Size
SVR-214T5	2-F14T5	26 7/16" X 9 1/2"
SVR-128T5	1-F28T5	50" X 4 7/8"
SVR-228T5	2-F28T5	50 1/2" X 9 1/2"
SVR-224T5HO	2-F24T5HO	26 7/16" X 9 1/2"
SVR-154T5HO	1-F54T5HO	50" X 4 7/8"
SVR-254T5HO	2-F54T5HO	50 1/2" X 9 1/2"

T8

Catalog No.	Lamps	Size
SVR-217	2-F17T8	26 7/16" X 9 1/2"
SVR-132	1-F32T8	50" X 4 7/8"
SVR-232	2-F32T8	50 1/2" X 9 1/2"

BIAX

SVR-240BX	2-F40BX	26 7/16" X 9 1/2"
SVR-250BX	2-F50BX	26 7/16" X 9 1/2"

ACCESSORIES AND ADDERS:

ELECTRICAL

277 Volt	277V
Emergency Battery Pack	EM
Standard 20% THD Electronic Ballast	EB8
Optional 10% THD Electronic Ballast	EB10
Damp Location	DL
Tamper Resistant Screws	Standard

