

T5 T8

### DESCRIPTION

The S66 Surface or Pendant series is designed as a linear lighting source for distinctive architectural interiors. This series provides the capability of direct downlight, indirect uplight, or a combination of both.

**HOUSING:** Housing is die formed of heavy gauge steel. The end caps are spot welded into housing for maximum strength and rigidity. Half ends (optional) are available to provide a continuous look of the diffuser when running in continuous rows. Plain ends (optional) without knockouts also available.

**MOUNTING:** Surface - directly to a ceiling will provide 100% downlight.

Pendant - pendant mounting can provide 100% downlight or 10% uplight when used with the uplight unit.

Indirect - 100% indirect uplight when used with indirect unit. Optional weld-in stem flanges are available to allow stems to be threaded directly into fixtures.

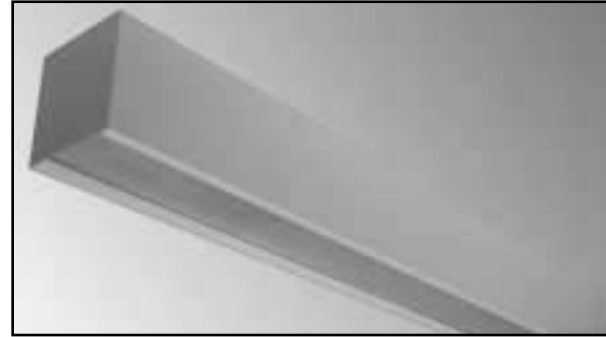
**FINISH:** All metal parts are cleaned and treated with three-stage phosphate coating. These are electrostatically sprayed with a high quality white Powdercoat providing a minimum 87% reflectivity.

**ELECTRICAL:** Ballasts are Electronic and CBM-ETL certified. Fixtures are U.L listed

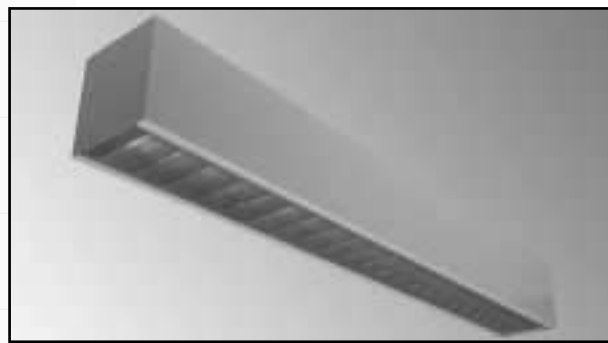
**SHIELDING:** Clear prismatic acrylic (pattern 12) is provided as standard shielding, which offers high efficiency illumination. Optional diffusers and louvers can be provided.

### DIMENSIONAL DATA

Shown with acrylic lens

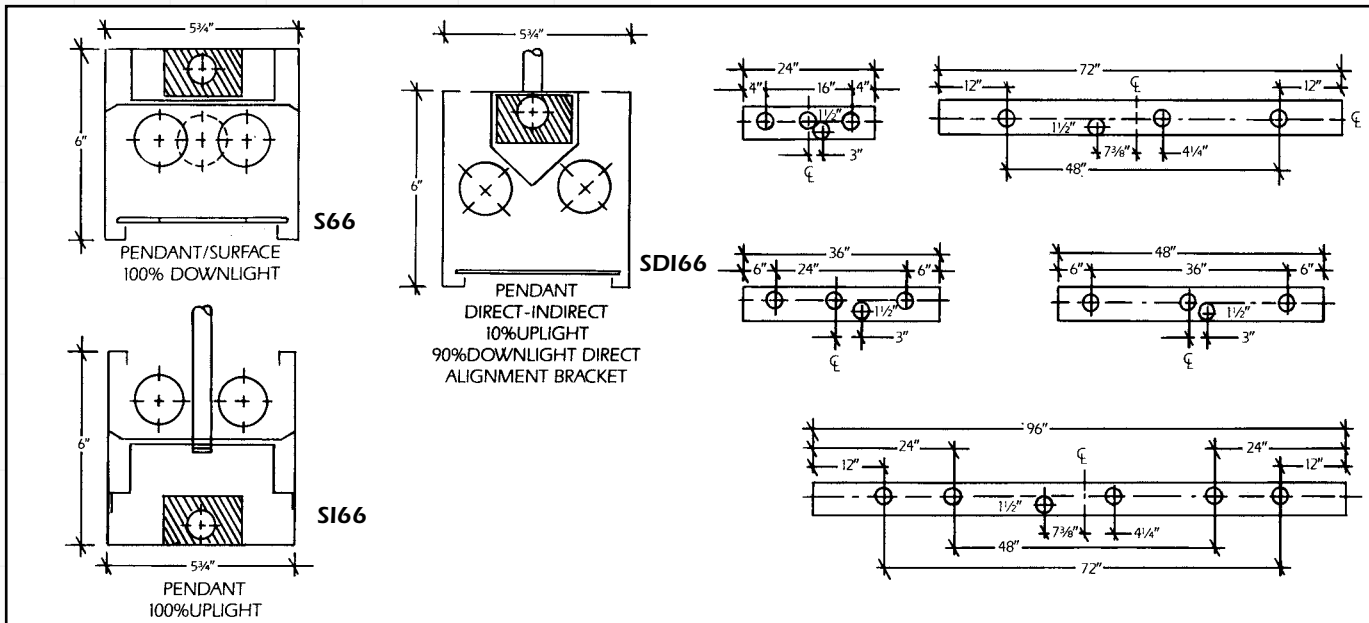


Shown with optional louver



### OPTIONAL FIXTURE DISTRIBUTIONS

		Catalog No. Prefix
Pendant/Surface	100%Downlight	S66
Pendant Indirect	100%Uplight	SI66
Pendant Indirect/Direct	90% Downlight 10% Uplight	SDI66



### OPTIONAL FIXTURE DISTRIBUTIONS

		Catalog No. Prefix
Pendant/Surface	100% Downlight	S66
Pendant Indirect	100% Uplight	SI66
Pendant Indirect/Direct	90% Downlight 10% Uplight	SDI66

### ORDERING INFORMATION:

#### T5 AND T5HO

Catalog No.	Lamps	Size
S66-114T5	1-F14T5	2'
S66-214T5	2-F14T5	2'
S66-221T5	2-F21T5	3'
S66-228T5	2-F28T5	4'
S66-121-6	2-F21T5	6'
S66-221-6	4-F21T5	6'
S66-128-8	2-F28T5	8'
S66-228-8	4-F28T5	8'
S66-224T5HO	2-F24T5HO	2'
S66-239T5HO	2-F39T5HO	3'
S66-254T5HO	2-F54T5HO	4'
S66-139T5HO-6	2-F39T5HO	6'
S66-239T5HO-6	4-F39T5HO	6'
S66-154T5HO-8	2-F54T5HO	8'
S66-254T5HO-8	4-F54T5HO	8'

#### T8

Catalog No.	Lamps	Size
S66-117	1-F17T8	2'
S66-217	2-F17T8	2'
S66-125	1-F25T8	3'
S66-225	2-F25T8	3'
S66-132	1-F32T8	4'
S66-232	2-F32T8	4'
S66-1040	1-F040	5'
S66-2040	2-F040	5'
S66-125-6	2-F25T8	6'
S66-225-6	4-F25T8	6'
S66-132-8	2-F32T8	8'
S66-232-8	4-F32T8	8'

### ACCESSORIES AND ADDERS:

#### ELECTRICAL

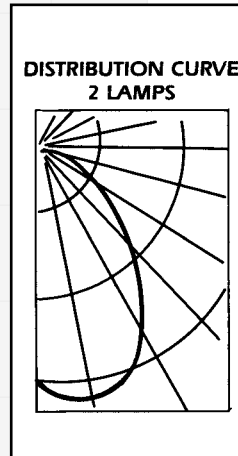
277 Volt	277V
Emergency Battery Pack	EM
Standard 20% THD Electronic Ballast	EB8
Optional 10% THD Electronic Ballast	EB10
Damp Location	DL

#### DIFFUSERS

Acrylic Prismatic	Standard
Smooth White Acrylic	ASFW
Square Silver Parabolic 1/2"x1/2"x1/2"	SPC1
Square Gold Parabolic 1/2"x1/2"x1/2"	GPC1
Square Silver Parabolic 1 1/2"x1 1/2"x1"	SPC2
Square Gold Parabolic 1 1/2"x1 1/2"x1"	GPC2
1/2" Cube Louver (White)	EC
1" Ht.x1" O.C. White Cross Baffle	CBW
Straight Blade Aluminum (Note: Custom Colors Available)	
1 3/8" Ht.x2" O.C. Parabolic Cross Baffle Semi-Specular Silver Aluminum	PBS
1 3/8" Ht.x2" O.C. Parabolic Cross Baffle Semi-Specular Gold Aluminum	PBG

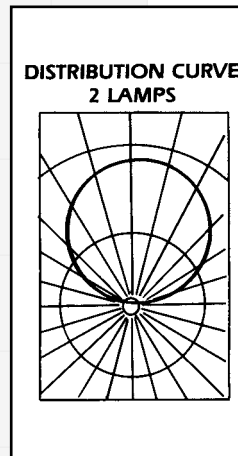


### PHOTOMETRIC DATA/100% DOWNLIGHT



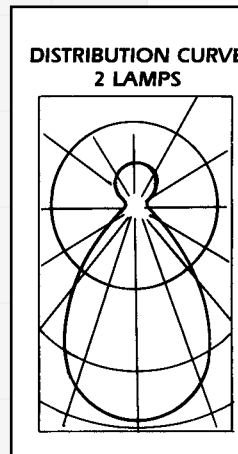
Reflectances	COEFFICIENTS OF UTILIZATION									
	20%									
Floor	80%			50%			30%			
Ceiling	70%	50%	30%	10%	50%	30%	10%	50%	30%	10%
Wall	Zonal Cavity Method									
RCR										
1	.55	.53	.52	.50	.50	.49	.48	.48	.47	.46
2	.51	.48	.45	.43	.46	.43	.42	.44	.42	.41
3	.48	.44	.40	.37	.41	.39	.37	.40	.38	.36
4	.44	.39	.36	.33	.38	.35	.32	.37	.34	.32
5	.41	.36	.32	.29	.34	.31	.28	.33	.30	.28
6	.38	.32	.29	.26	.31	.28	.25	.30	.27	.25
7	.36	.30	.26	.23	.28	.25	.23	.28	.25	.23
8	.33	.27	.23	.20	.26	.22	.20	.25	.22	.20
9	.30	.24	.20	.18	.23	.20	.18	.23	.20	.18
10	.28	.22	.18	.16	.21	.18	.16	.21	.18	.16

### PHOTOMETRIC DATA-PENDANT/INDIRECT



Reflectances	COEFFICIENTS OF UTILIZATION									
	20%									
Floor	80%			50%			30%			
Ceiling	70%	50%	30%	10%	50%	30%	10%	50%	30%	10%
Wall	Zonal Cavity Method									
RCR										
1	.59	.56	.53	.51	.33	.32	.30	.19	.18	.18
2	.53	.49	.45	.42	.29	.27	.25	.16	.16	.15
3	.49	.43	.38	.34	.25	.23	.21	.14	.13	.12
4	.44	.38	.33	.29	.22	.20	.18	.13	.12	.10
5	.41	.33	.28	.25	.20	.17	.15	.11	.10	.09
6	.37	.30	.25	.21	.18	.15	.13	.10	.09	.09
7	.34	.27	.22	.19	.16	.13	.11	.09	.08	.07
8	.32	.24	.20	.16	.15	.12	.10	.08	.07	.06
9	.30	.22	.18	.15	.13	.11	.09	.08	.06	.05
10	.28	.20	.16	.13	.12	.10	.08	.07	.06	.05

### PHOTOMETRIC DATA-PENDANT/INDIRECT-DIRECT



Reflectances	COEFFICIENTS OF UTILIZATION									
	20%									
Floor	80%			50%			30%			
Ceiling	70%	50%	30%	10%	50%	30%	10%	50%	30%	10%
Wall	Zonal Cavity Method									
RCR										
1	.50	.49	.47	.45	.43	.42	.41	.40	.39	.38
2	.47	.44	.41	.39	.39	.37	.35	.36	.35	.33
3	.43	.39	.36	.34	.35	.33	.31	.33	.31	.29
4	.40	.36	.32	.29	.32	.29	.27	.30	.28	.26
5	.37	.32	.28	.26	.29	.26	.24	.27	.25	.23
6	.35	.29	.26	.23	.27	.24	.22	.25	.23	.21
7	.32	.27	.23	.20	.24	.21	.19	.23	.20	.19
8	.30	.24	.21	.18	.22	.19	.17	.21	.18	.17
9	.28	.22	.18	.16	.20	.17	.15	.19	.16	.15
10	.26	.20	.17	.14	.18	.16	.14	.17	.15	.13