

DESCRIPTION

A companion to the B21 series this solid front fixture utilizes the standard T8 lamp and Vertically Prismatic Batwing acrylic lens.

SPECIFICATIONS

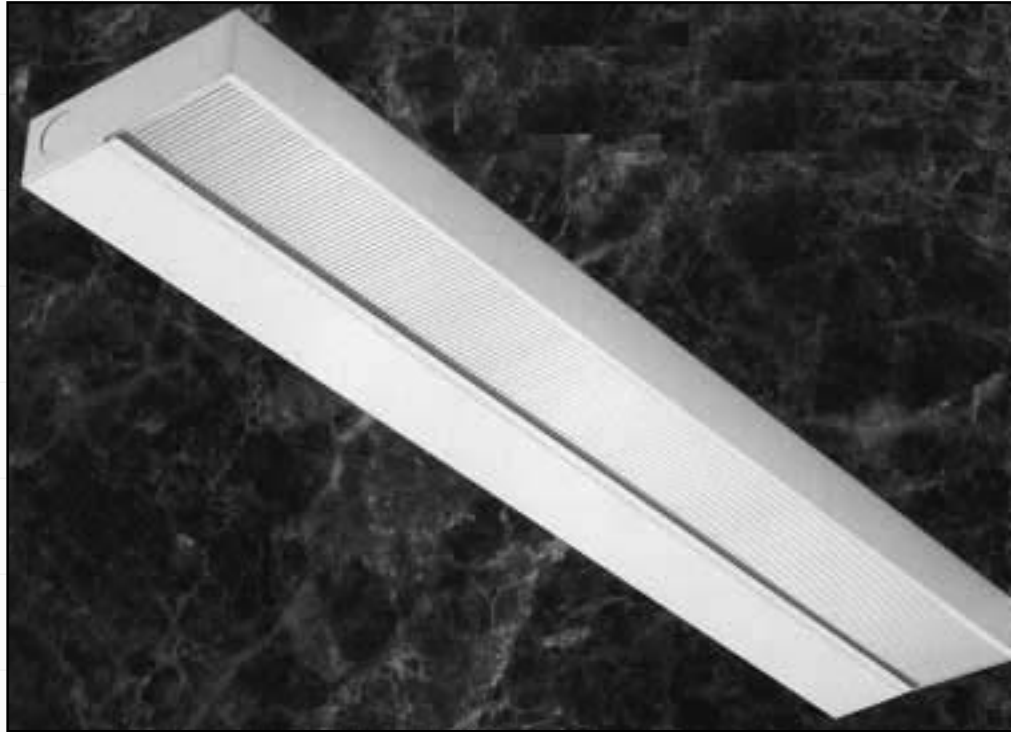
METAL COMPONENTS:
 Die formed of heavy cold rolled primed steel. Hinged one piece cover for easy access to all electrical components.

FINISH:
 Durable baked white enamel

SHIELDING:
 Vertically prismatic "Lift & Shift" Batwing acrylic lens.

ELECTRICAL COMPONENTS:
 Ballasts are Electronic and CBM-ETL certified. Fixtures are U.L. Listed.

MOUNTING:
 Surface, individually or continuous rows.



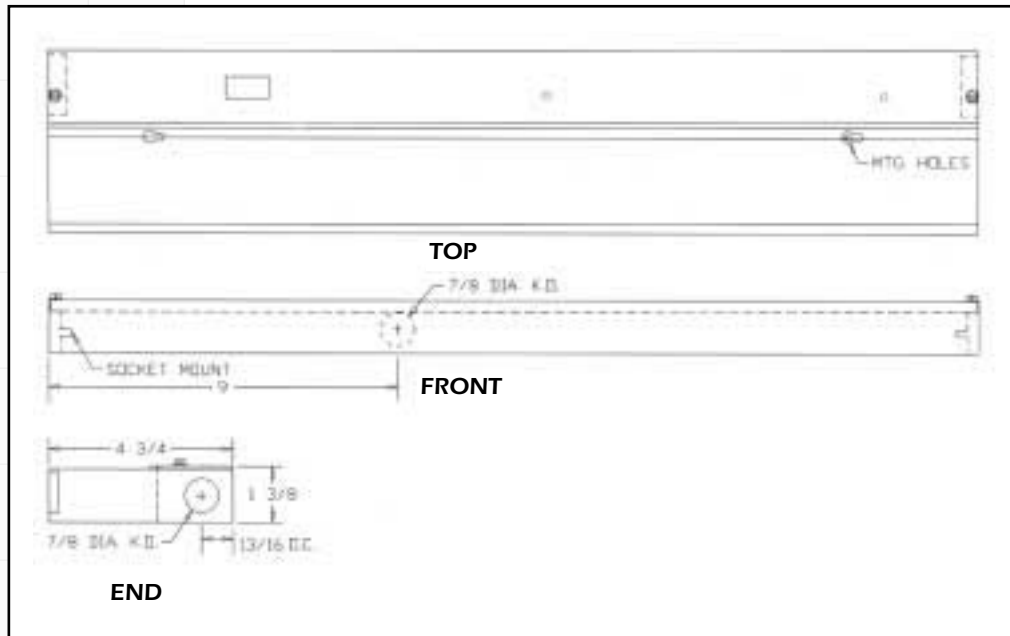
ORDERING INFORMATION:

T8 ELECTRONIC BALLAST		
Catalog No.	Lamps	Size
B19-117	1-F17T8	24-1/16"
B19-125	1-F25T8	36- 1/4"
B19-132	1-F32T8	48-1/4"

T8 MAGNETIC BALLAST		
Catalog No.	Lamps	Size
B19-115	1-F15T8	18-1/16"

ACCESSORIES AND ADDERS:

ELECTRICAL	
277 Volt	277V
Damp Location	DL
Rocker Switch	R
Cord and Plug (specify length)	CP3
(3-wire) & (120V only)	
Convenience Outlet	CO



DESCRIPTION

A companion to the B19 series this solid front fixture utilizes the low profile T5 lamp and Vertically Prismatic Batwing acrylic lens.

SPECIFICATIONS

METAL COMPONENTS:

Die formed of heavy cold rolled primed steel. Hinged one piece cover for easy access to all electrical components.

FINISH:

Durable baked white enamel

SHIELDING:

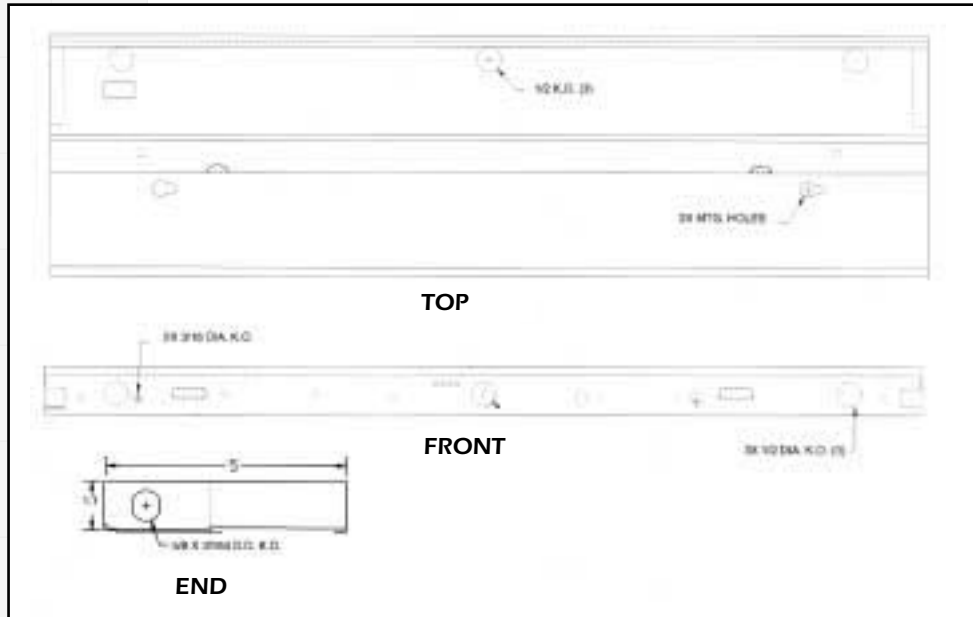
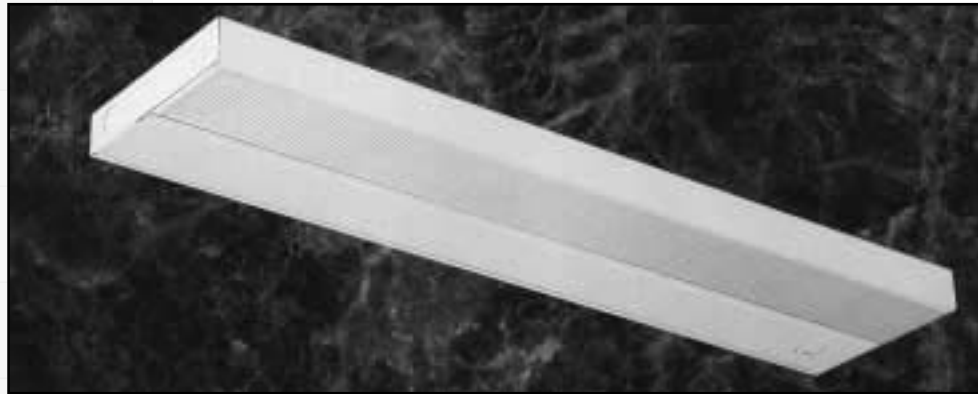
Vertically prismatic "Lift & Shift" Batwing acrylic lens.

ELECTRICAL COMPONENTS:

Ballasts are Electronic and CBM-ETL certified. Fixtures are U.L. Listed.

MOUNTING:

Surface, individually or continuous rows.



ORDERING INFORMATION:

T5

Catalog No.	Lamps	Size (L)
B21-12	1-F8T5	12 1/4"
B21-21	1-F13T5	21 1/4"
B21-24	2-F8T5	24 1/2"
B21-33	1-F13T5	33 1/2"
	& 1-F13T5	
B21-42	2-F13T5	42 1/2"
B21-114	1-F14T5	22 19/32"
B21-121	1-F21T5	34-7/16"
B21-128	1-F28T5	46-7/32"

ACCESSORIES AND ADDERS:

ELECTRICAL

277 Volt	277V
Damp Location	DL
Rocker Switch	R
Cord and Plug (specify length)	CP3
(3-wire) & (120V only)	
Convenience Outlet	CO

