

SPECIFICATIONS

METAL CONSTRUCTION:

Housing is die-formed of heavy gauge steel for uniformity and stability. Wiring components mounted to one-piece back housing, permitting removal of ballast cover for maintenance without disturbing inner wiring. Ballast covers may be installed or removed without the use of tools. End plate is used as coupler in continuous rows sliding into position without the use of tools or hardware.

FINISH:

All metal parts are cleaned and treated with a five-stage phosphate coating then electrostatically sprayed with a high quality white enamel and baked at 357° to provide a minimum reflectance factor of 87%.

WIRING:

All units are wired and ready for installation with approved components for 110-125 volt, 60 cycle AC operation including ETL-CBM Class "P" ballasts for T12 lamps and Electronic for T8 lamps.

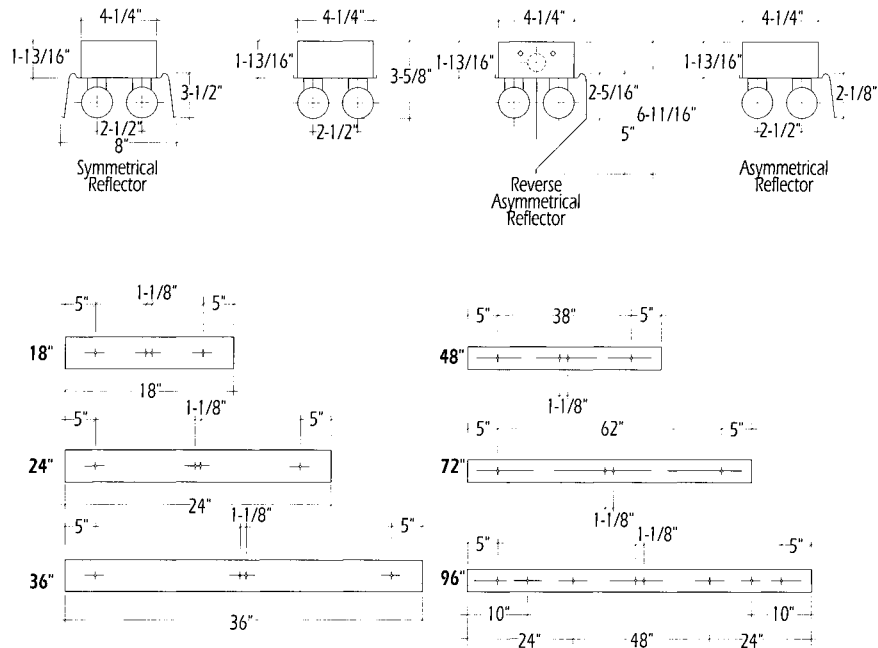
APPROVAL:

All units are Underwriters' Laboratory (U.L.) approved.

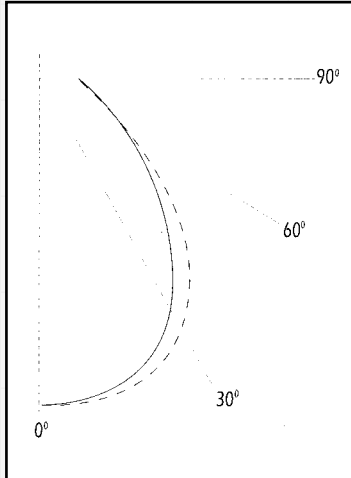
MOUNTING:

Units may be surface or pendant mounted, individually or in continuous rows. When installed in continuous rows, sockets are back to back and combination end plate-couplers are inserted into ends of adjoining units and act as a sleeve coupling. Housing forms a continuous wireway.

DIMENSIONAL DATA



PHOTOMETRIC DATA



Two Lamp F32T8 Coefficients of Utilization

RC RW	50				70				50			30			10			0
	70	50	30	10	70	50	30	10	50	30	10	50	30	10	50	30	10	0
1	88	83	79	75	84	80	76	72	73	70	67	67	64	62	61	59	57	54
2	79	71	65	59	75	68	62	57	62	58	54	57	53	50	52	49	46	43
3	72	62	55	49	68	60	53	47	55	49	44	50	45	41	46	42	39	36
4	65	55	47	41	62	52	45	39	48	42	37	44	39	35	40	36	33	30
5	59	48	40	34	56	46	38	33	42	36	31	39	33	29	35	31	27	25
6	55	42	34	29	52	41	33	28	37	31	26	34	29	25	32	27	23	21
7	50	38	30	25	48	36	29	24	34	27	23	31	24	21	28	24	20	18
8	46	34	26	21	44	33	25	21	30	24	19	28	22	18	25	21	17	15
9	42	31	23	18	40	29	22	18	27	21	17	25	19	16	23	18	15	13
10	39	28	20	16	38	27	20	15	25	19	15	23	17	14	21	16	13	11

Zonal Cavity Method-Floor Refl. .20 Spacing to Mounting Height Ratio = 1.6

ORDERING INFORMATION:

TWO LAMP WIDE

MAGNETIC, RAPID & TRIGGER START

Catalog No.	Lamps	Ballast	Size
NS-215LTS	2-F15T12	LTS	18"
NS-215HTS	2-F15T12	HTS	18"
NS-220LTS	2-F20T12	LTS	24"
NS-220HTS	2-F20T12	HTS	24"

T8-ELECTRONIC BALLAST

Catalog No.	Lamps	Ballast	Size
NS-217	2-F17T8	EB8	2'
NS-225	2-F25T8	EB8	3'
NS-232	2-F32T8	EB8	4'
NS-2040	2-FO40T8	EB8	5'
NS-225-6	2-F25T8	EB8	6'
NS-232-8	2-F32T8	EB8	8'

THREE LAMP WIDE

T8-ELECTRONIC BALLAST

Catalog No.	Lamps	Ballast	Size
NS-317	3-F17T8	EB8	2'
NS-325	3-F25T8	EB8	3'
NS-332	3-F32T8	EB8	4'
NS-332-8	3-F32T8	EB8	8'

ACCESSORIES AND ADDERS:

ELECTRICAL

277 Volt	277V
Emergency Battery Pack*	EM
Standard 20% THD Electronic Ballast*	EB8
Optional 10% THD Electronic Ballast*	EB10
Wire Guard	WG
Damp Location	DL
Zero Degree Starting	LT
Radio Frequency Suppressor	RFI
Dimming Ballast Available*	

*T8 Only

Reflectors	
Asymmetric Reflector	ASY
Symmetric Reflector	SYM
Reverse Asymmetric Reflector	RASY
Custom Reflectors are Available	

